

**SAFE**  
**TOUGH**  
**RELIABLE**



**ID400**

**Diesel Indirect Fired Heater, High Capacity**

**SURE FLAME**

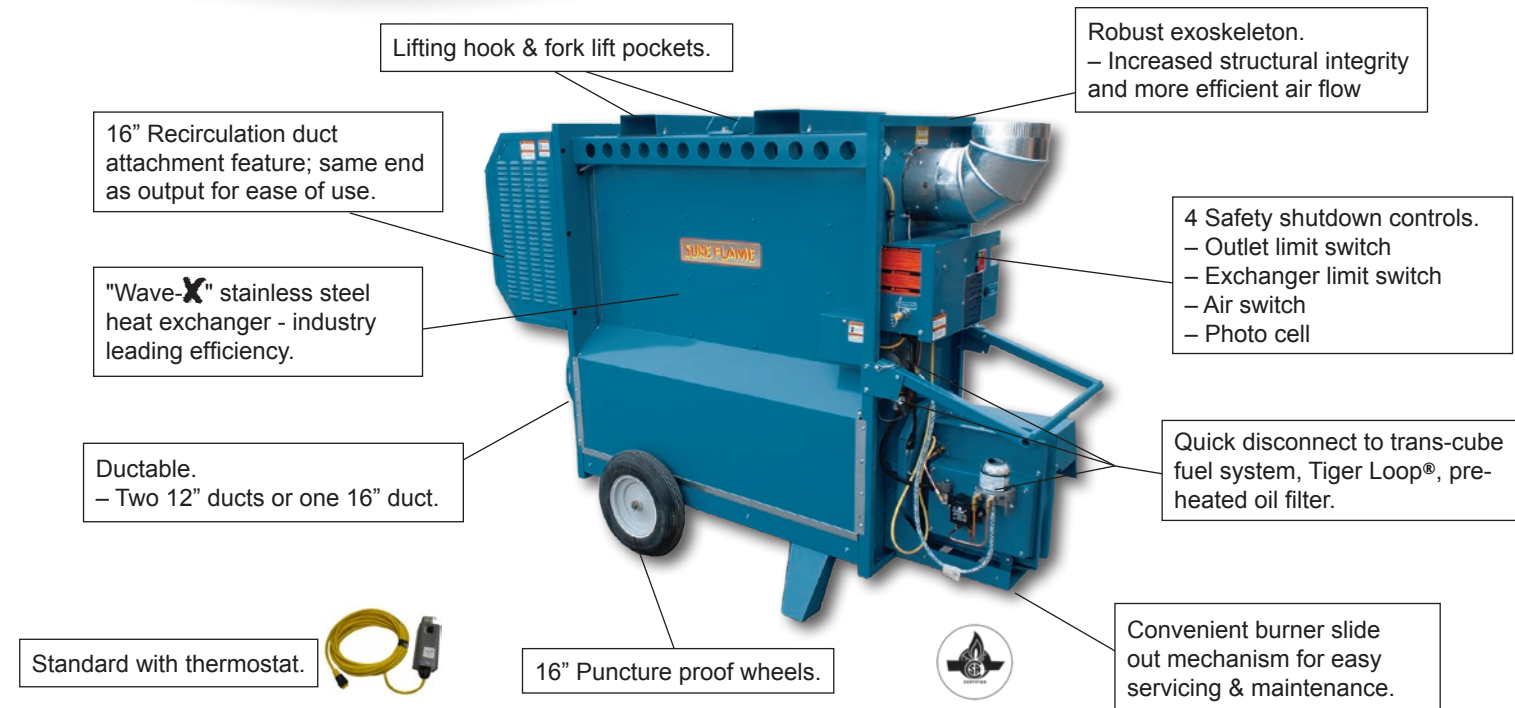
1-800-661-1162

[www.sureflame.ca](http://www.sureflame.ca)

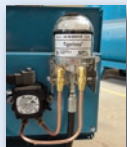
[info@sureflame.ca](mailto:info@sureflame.ca)

# ID400

## 400,000 BTU/HR



## FEATURES



- **Fuel system.**
  - Tiger Loop®
  - Preheated oil filter
  - Quick disconnect
  - Better start-up in cold weather
  - Single line, no return line required



- **Recirculation feature same end design.**
  - Increased efficiency
  - Return air 16" duct
  - Output two 12" or single 16"



- **Stackable.**
  - Excellent for off-season storage

## SPECIFICATIONS

HEAT CAPACITY	400,000BTU
FUEL CONSUMPTION (Diesel)	10.8 L/hr
FUEL TANK	Quick disconnect single line to external tank setup.
RUN TIME	Varies depending on tank selection
POWER REQUIREMENTS	12A
HEAT EXCHANGER	20ga SS3304
COMBUSTION CHAMBER	18ga SS3304
DIMENSIONS (LxWxH)	85" x 32" x 59"
NET WEIGHT	662 lbs
TEMPERATURE RISE (w/o DUCT)	72°C
TEMPERATURE RISE (w/ DUCT)	140°C
MAX HEATED AIR FLOW (w/o DUCT)	3000CFM**
AIR OUTLET	Two 12" / One 16"
AIR INLET	Ductable 16"
EFFICIENCY	84%
FAN RATING	5000 CFM@2.65
FINISH	Powder Coated
IGNITION	Direct Spark
WHEELS	Two 16" Dia Puncture Proof

For more information Please contact us at 800.661.1162 info@sureflame.ca

\*Actual output will depend on operating conditions.  
\*\*Ideal conditions.

400-11-1